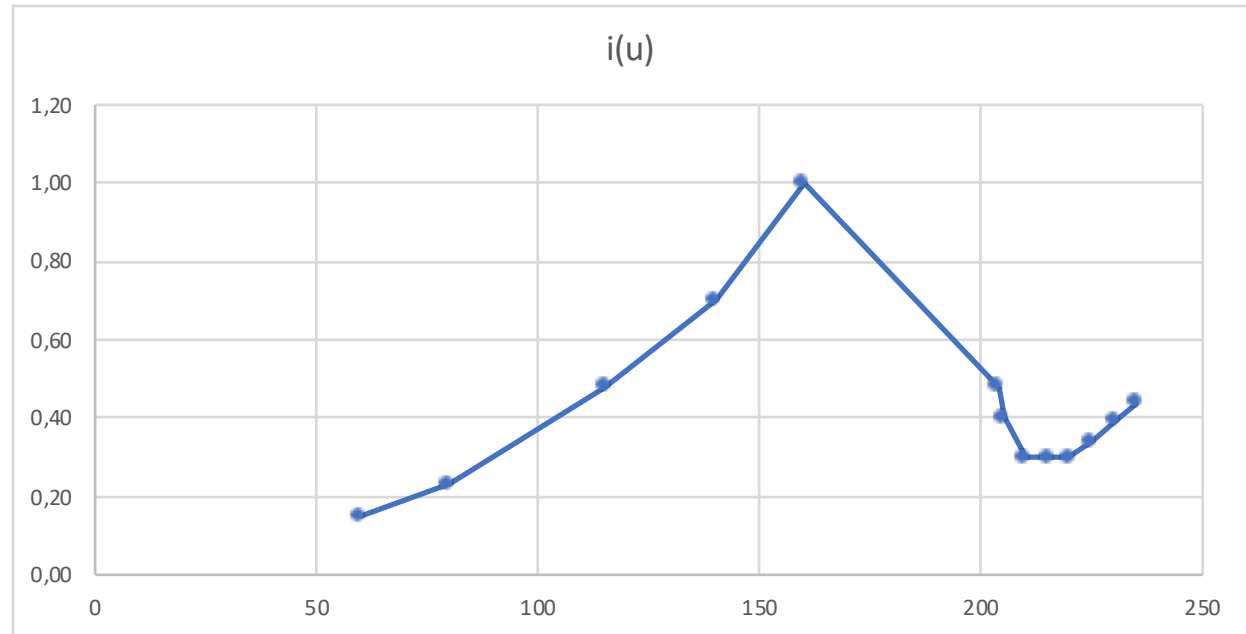
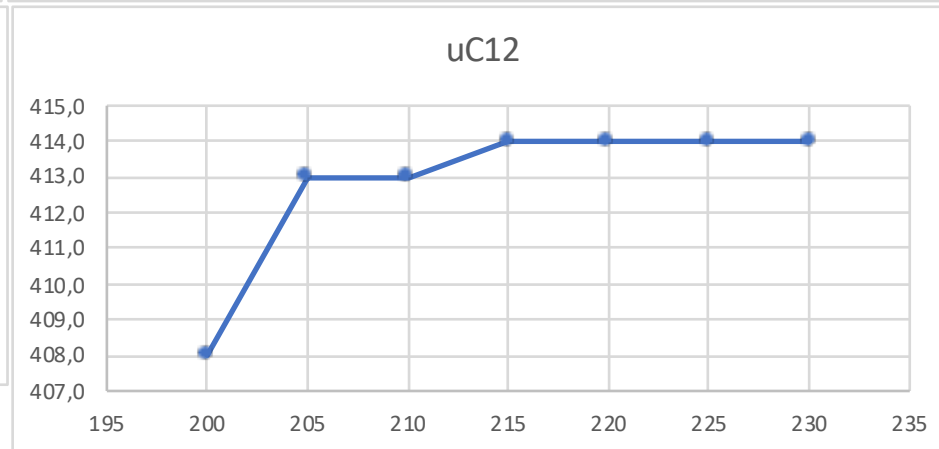
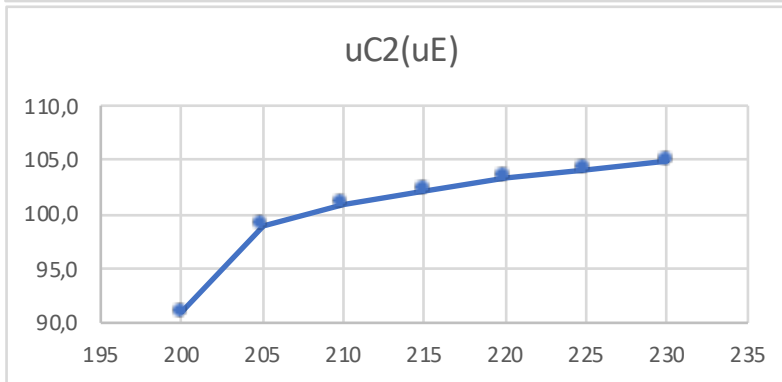
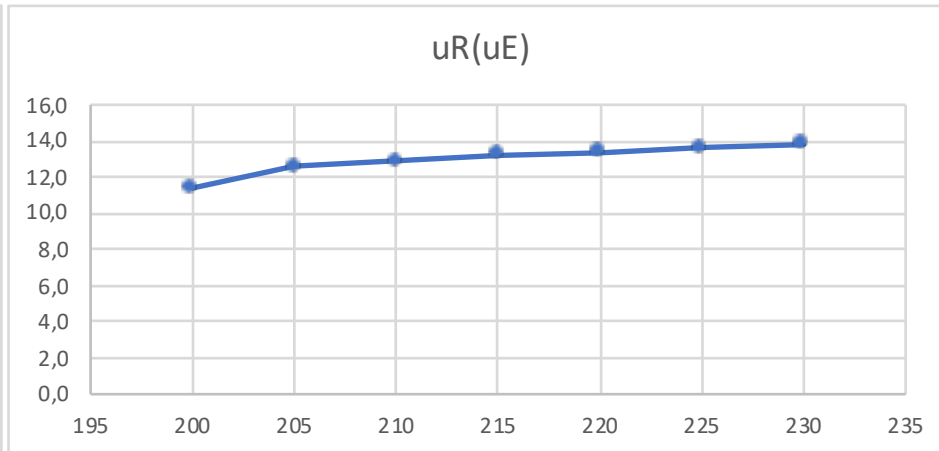
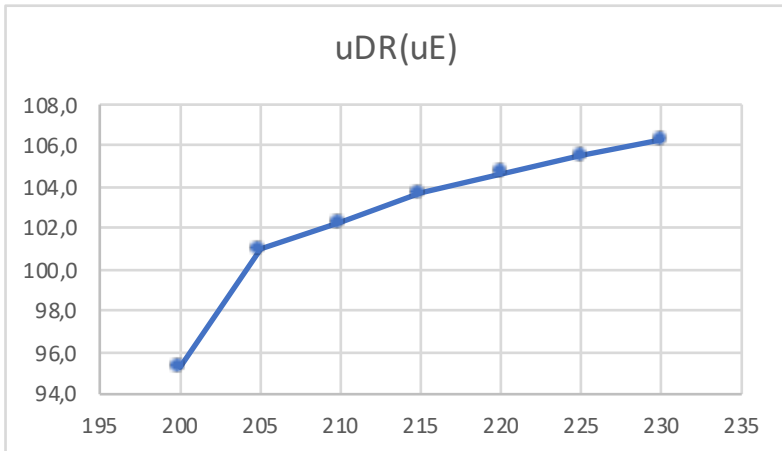


| uE | iE |
|-----|------|
| 60 | 0,15 |
| 80 | 0,23 |
| 115 | 0,48 |
| 140 | 0,70 |
| 160 | 1,00 |
| 204 | 0,48 |
| 205 | 0,40 |
| 210 | 0,30 |
| 215 | 0,30 |
| 220 | 0,30 |
| 225 | 0,34 |
| 230 | 0,39 |
| 235 | 0,44 |



| uE | uDR | uR | uC2 | uC12 | Summe uDR, uC2, uR | uA |
|-----|-------|------|-------|-------|--------------------|-------|
| 200 | 95,3 | 11,4 | 91,0 | 408,0 | 197,7 | 233,0 |
| 205 | 101,0 | 12,6 | 99,0 | 413,0 | 212,6 | 233,5 |
| 210 | 102,3 | 12,9 | 101,0 | 413,0 | 216,2 | 233,5 |
| 215 | 103,7 | 13,2 | 102,2 | 414,0 | 219,1 | 233,4 |
| 220 | 104,7 | 13,4 | 103,4 | 414,0 | 221,5 | 233,1 |
| 225 | 105,5 | 13,6 | 104,1 | 414,0 | 223,2 | 232,5 |
| 230 | 106,3 | 13,8 | 104,9 | 414,0 | 225,0 | 231,9 |



- uE Eingangsspannung
- uDR Spannung an der Drossel (Stromkreis mit Drossel, Kondensator 2 uF und Widerstand)
- uR Spannung am Widerstand 50 Ohm
- uC2 Spannung am Kondensator 2 uF
- uC12 Spannung am Kondensator 12 uF
- uA Ausgangsspannung (stabilisiert)

